

→ Control Boxes Are NOT Water Tight ←

- Clean with a soft damp cloth only
- CAUTION – Excessive water will cause failures



- Do not power wash
- Do not hose down
- Do not use excessive water when cleaning



Installation

- Always mount vertically, do not mount horizontally
- Use included screws, Don't use alternate hardware



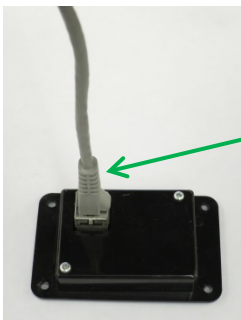
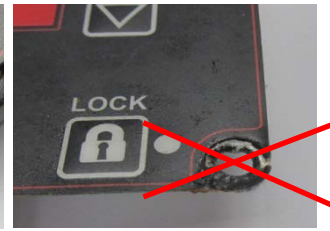
- Do not over tighten
- Do not use lock-washers



Over Tightening Causes Failures



Lock Washer Damage



- Insert Ethernet cable straight into RJ-45 connector
- Strain relieve cable so that connector entry remains straight
- Route and protect cable to prevent damage/pulling from behind/under counter installations/storage